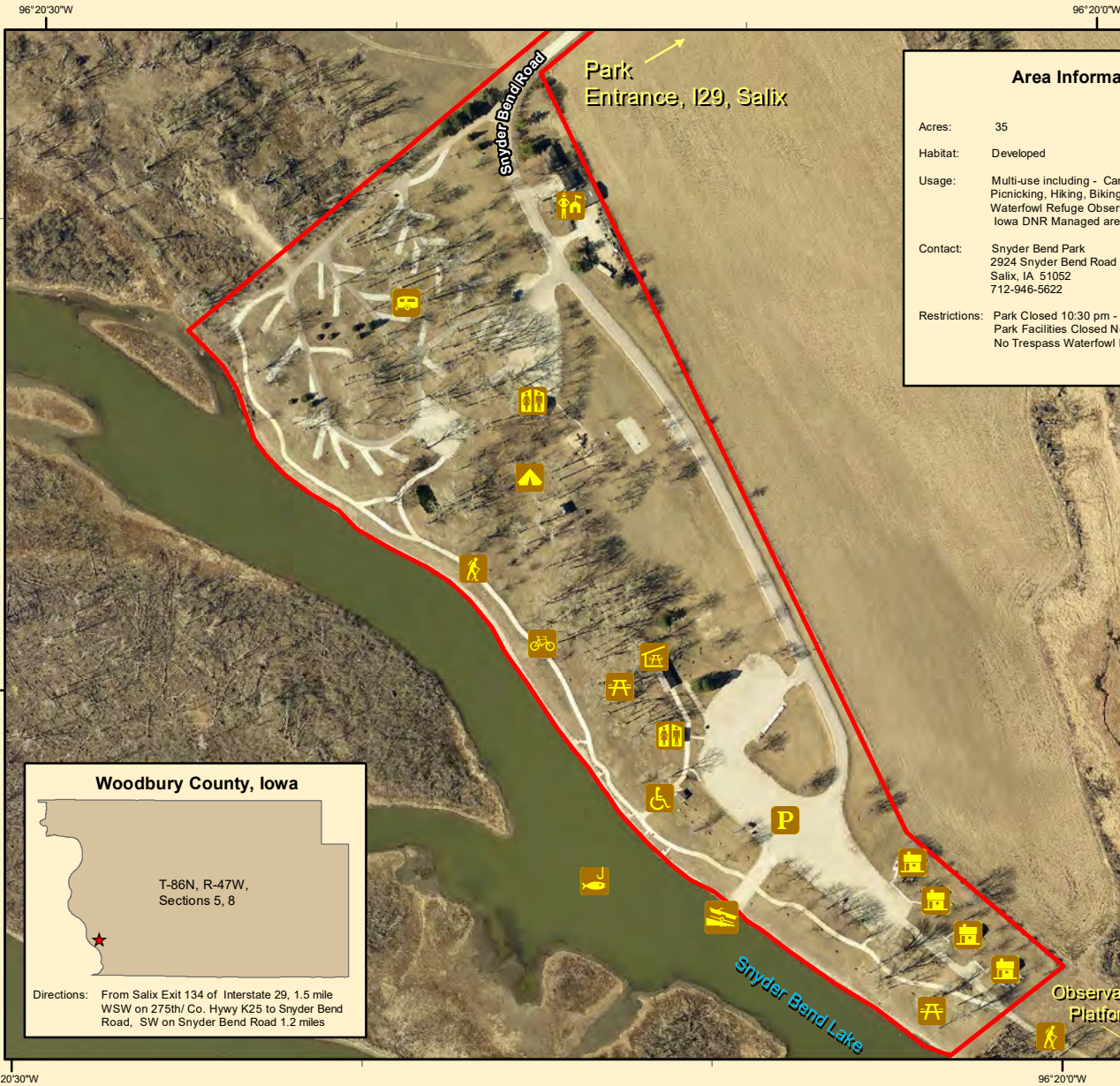
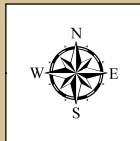


Woodbury County Conservation Dept.

4500 Sioux River Road, Sioux City, Iowa 51109
 Phone: 712-258-0838
 www.woodburyparks.org



Area Information

Acres: 35
 Habitat: Developed
 Usage: Multi-use including - Camping, Fishing, Picnicking, Hiking, Biking, Boating, Kayaking, Waterfowl Refuge Observation Platform on Iowa DNR Managed area, Bird Watching
 Contact: Snyder Bend Park
 2924 Snyder Bend Road
 Salix, IA 51052
 712-946-5622
 Restrictions: Park Closed 10:30 pm - 6:00 am to non-campers
 Park Facilities Closed November 1 - May 1
 No Trespass Waterfowl Refuge - dates posted

Woodbury County, Iowa

T-86N, R-47W,
 Sections 5, 8

Directions: From Salix Exit 134 of Interstate 29, 1.5 mile WSW on 275th/ Co. Hwy K25 to Snyder Bend Road, SW on Snyder Bend Road 1.2 miles

Legend

Snyder Bend Park	Tent Camping	Restrooms	Cabin Rentals	Biking
Picnicking	Trailer Camping	Handicap Accessible	Ranger Station	Parking
Shelter	Boat Launch	Fishing	Hiking	

Snyder Bend Park

Aerial Photo - Summer, 2010
 Map Creation Date: 1/2011

Disclaimer: Information and boundaries depicted on this map have been carefully reviewed. However, this data is not guaranteed to be free of errors or inaccuracies as provided by Woodbury County or other providers and sources of data contained in this map. Boundary signs have been placed on our areas to ensure users do not trespass on private property.