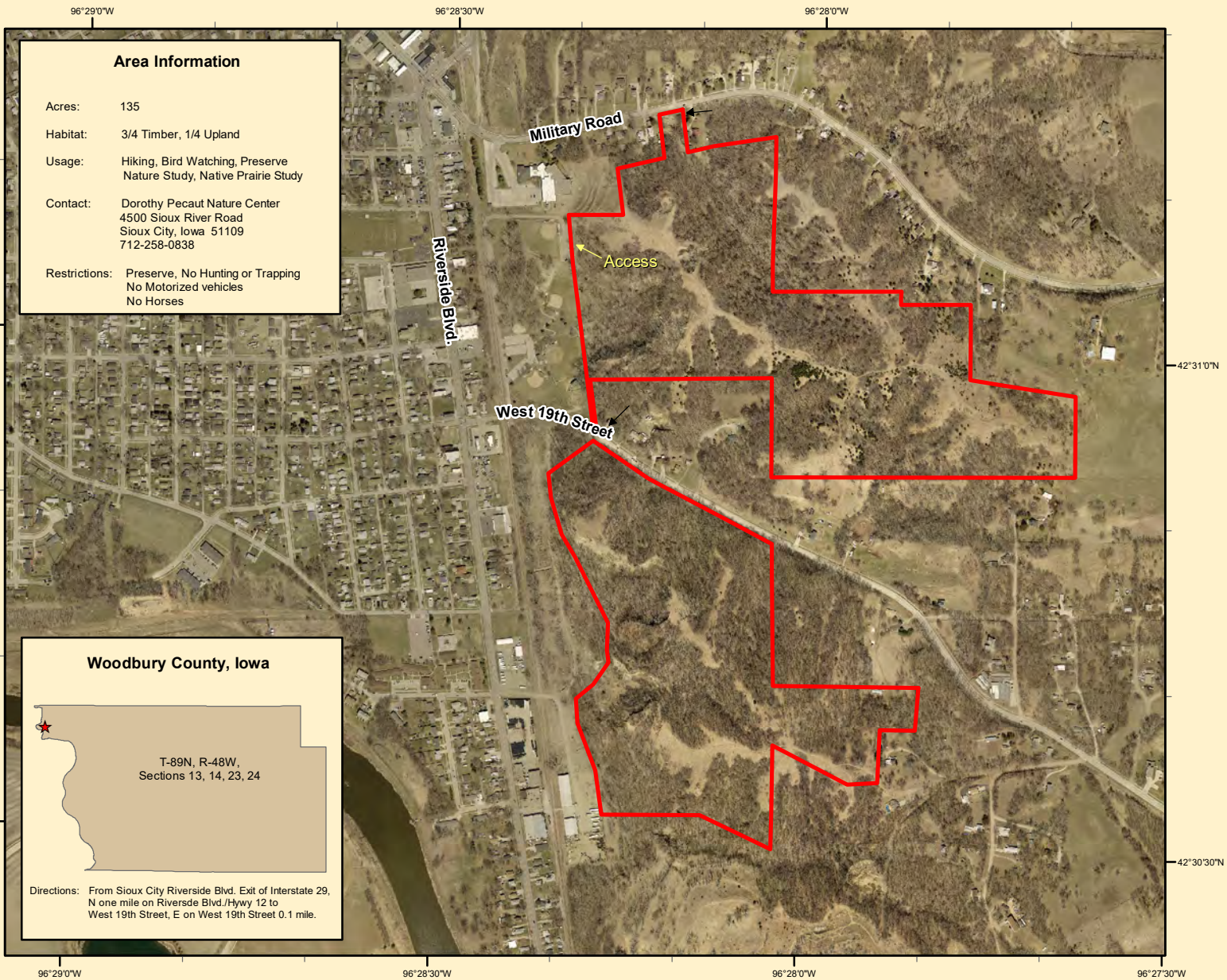




# Woodbury County Conservation Dept.

4500 Sioux River Road, Sioux City, Iowa 51109  
Phone: 712-258-0838  
www.woodburyparks.org



**Area Information**

Acres: 135

Habitat: 3/4 Timber, 1/4 Upland

Usage: Hiking, Bird Watching, Preserve Nature Study, Native Prairie Study

Contact: Dorothy Pecaut Nature Center  
4500 Sioux River Road  
Sioux City, Iowa 51109  
712-258-0838


Restrictions: Preserve, No Hunting or Trapping  
No Motorized vehicles  
No Horses

**Woodbury County, Iowa**

T-89N, R-48W,  
Sections 13, 14, 23, 24

Directions: From Sioux City Riverside Blvd. Exit of Interstate 29, N one mile on Riverside Blvd./Hywy 12 to West 19th Street, E on West 19th Street 0.1 mile.

**Legend**

 Riverside Bluffs

## Riverside Bluffs



Aerial Photo - Summer, 2010  
Map Creation Date: 1/2011

Disclaimer: Information and boundaries depicted on this map have been carefully reviewed. However, this data is not guaranteed to be free of errors or inaccuracies as provided by Woodbury County or other providers and sources of data contained in this map. Boundary signs have been placed on our areas to ensure users do not trespass on private property.