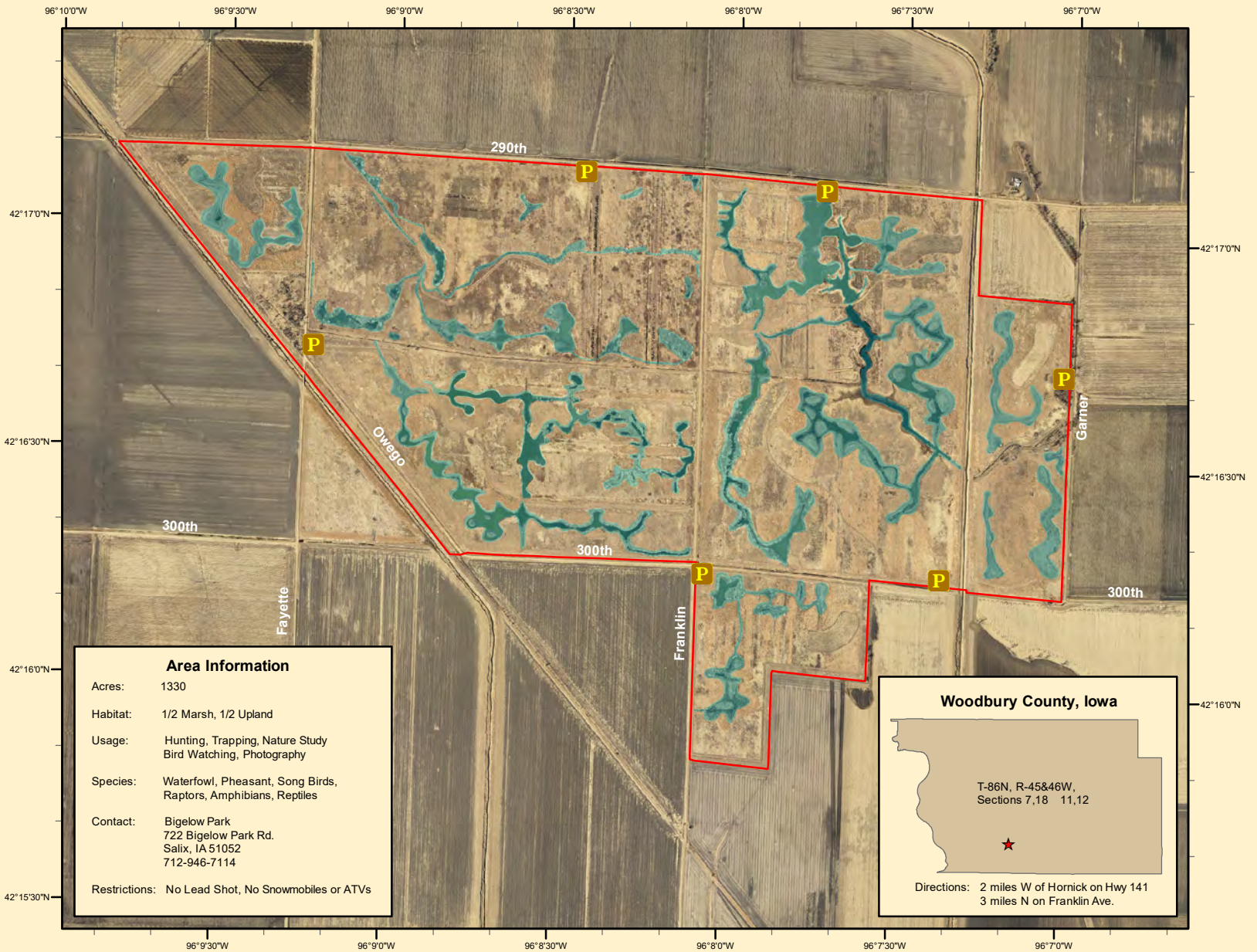




# Woodbury County Conservation Dept.

4500 Sioux River Road, Sioux City, Iowa 51109  
Phone: 712-258-0838  
www.woodburyparks.org



**Area Information**

Acres: 1330

Habitat: 1/2 Marsh, 1/2 Upland

Usage: Hunting, Trapping, Nature Study  
Bird Watching, Photography

Species: Waterfowl, Pheasant, Song Birds,  
Raptors, Amphibians, Reptiles

Contact: Bigelow Park  
722 Bigelow Park Rd.  
Salix, IA 51052  
712-946-7114

Restrictions: No Lead Shot, No Snowmobiles or ATVs

**Woodbury County, Iowa**

T-86N, R-45&46W,  
Sections 7,18 11,12

Directions: 2 miles W of Hornick on Hwy 141  
3 miles N on Franklin Ave.

**Legend**

Owego Wetland Complex

Parking areas

**Owego Wetland Complex**

Co-operating Agencies

0 0.25 0.5 Miles

Aerial Photo - Summer, 2010  
Map Creation Date: 1/2011

Disclaimer: Information and boundaries depicted on this map have been carefully reviewed. However, this data is not guaranteed to be free of errors or inaccuracies as provided by Woodbury County or other providers and sources of data contained in this map. Boundary signs have been placed on our areas to ensure users do not trespass on private property.