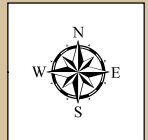




# Woodbury County Conservation Dept.

4500 Sioux River Road, Sioux City, Iowa 51109  
 Phone: 712-258-0838  
 www.woodburyparks.org



### Area Information

Acres: 629

Habitat: 1/2 Timber, 1/4 Upland, 1/8 Marsh, 1/8 Water

Usage: Multi-use including Hiking, Biking, Swimming, Camping, Fishing, Restricted Area Hunting, Shooting Range, Picnicking, Canoeing, Bird Watching

Species: Deer, Pheasant, Squirrel, Rabbit, Waterfowl

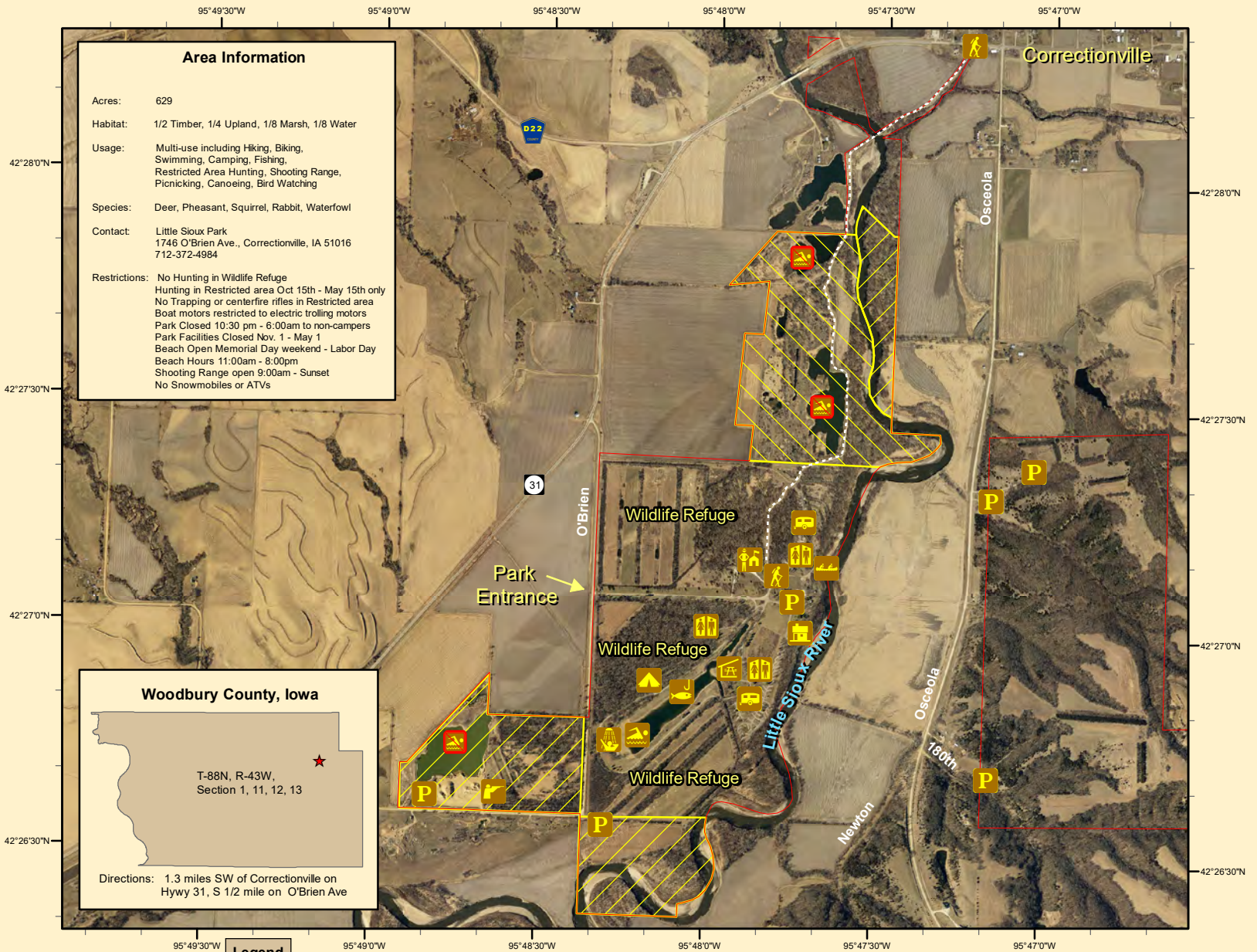
Contact: Little Sioux Park  
 1746 O'Brien Ave., Correctionville, IA 51016  
 712-372-4984

Restrictions: No Hunting in Wildlife Refuge  
 Hunting in Restricted area Oct 15th - May 15th only  
 No Trapping or centerfire rifles in Restricted area  
 Boat motors restricted to electric trolling motors  
 Park Closed 10:30 pm - 6:00am to non-campers  
 Park Facilities Closed Nov. 1 - May 1  
 Beach Open Memorial Day weekend - Labor Day  
 Beach Hours 11:00am - 8:00pm  
 Shooting Range open 9:00am - Sunset  
 No Snowmobiles or ATVs

### Woodbury County, Iowa

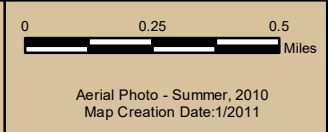
T-88N, R-43W,  
 Section 1, 11, 12, 13

Directions: 1.3 miles SW of Correctionville on Hywy 31, S 1/2 mile on O'Brien Ave



Legend					

## Little Sioux Park



Disclaimer: Information and boundaries depicted on this map have been carefully reviewed. However, this data is not guaranteed to be free of errors or inaccuracies as provided by Woodbury County or other providers and sources of data contained in this map. Boundary signs have been placed on our areas to ensure users do not trespass on private property.





# Woodbury County Conservation Dept.

4500 Sioux River Road, Sioux City, Iowa 51109  
Phone: 712-258-0838  
www.woodburyparks.org



**Area Information**

Acres: 629

Habitat: 1/2 Timber, 1/4 Upland, 1/8 Marsh, 1/8 Water

Usage: Multi-use including Hiking, Biking, Swimming, Camping, Fishing, Restricted Area Hunting, Shooting Range, Picnicking, Canoeing, Bird Watching

Species: Deer, Pheasant, Squirrel, Rabbit, Waterfowl

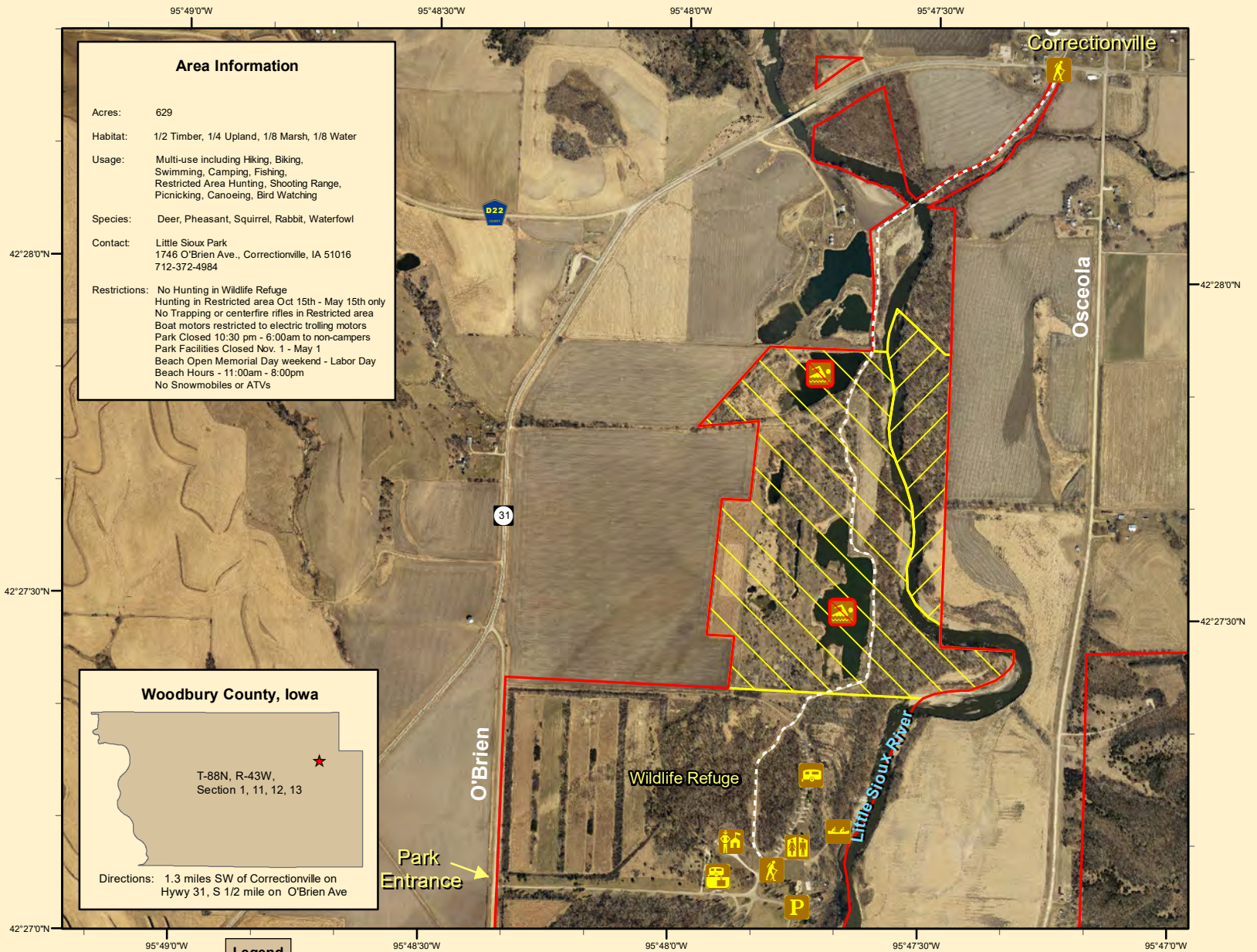
Contact: Little Sioux Park  
1746 O'Brien Ave., Correctionville, IA 51016  
712-372-4984

Restrictions: No Hunting in Wildlife Refuge  
Hunting in Restricted area Oct 15th - May 15th only  
No Trapping or centerfire rifles in Restricted area  
Boat motors restricted to electric trolling motors  
Park Closed 10:30 pm - 6:00am to non-campers  
Park Facilities Closed Nov. 1 - May 1  
Beach Open Memorial Day weekend - Labor Day  
Beach Hours - 11:00am - 8:00pm  
No Snowmobiles or ATVs

**Woodbury County, Iowa**

T-88N, R-43W,  
Section 1, 11, 12, 13

Directions: 1.3 miles SW of Correctionville on  
Hywy 31, S 1/2 mile on O'Brien Ave



Legend			
Union Bridge Trail	Little Sioux Park	Hunting Area	Trailer Dump
Shagbark Hills	Restricted Use Hunting Area	Modern Camping	No Swimming
	Restrooms	Trail Head	Ranger Station
		Canoeing	Parking

**Little Sioux Park**  
**North**

0 0.25  
Miles

Aerial Photo - Summer, 2010  
Map Creation Date: 1/2011

Disclaimer: Information and boundaries depicted on this map have been carefully reviewed. However, this data is not guaranteed to be free of errors or inaccuracies as provided by Woodbury County or other providers and sources of data contained in this map. Boundary signs have been placed on our areas to ensure users do not trespass on private property.





# Woodbury County Conservation Dept.

4500 Sioux River Road, Sioux City, Iowa 51109  
 Phone: 712-258-0838  
 www.woodburyparks.org



## Area Information

Acres: 629  
 Habitat: 1/2 Timber, 1/4 Upland, 1/8 Marsh, 1/8 Water  
 Usage: Multi-use including Hiking, Biking, Swimming, Camping, Fishing, Hunting, Shooting Range, Picnicking, Canoeing, Bird Watching  
 Species: Deer, Pheasant, Squirrel, Rabbit, Waterfowl  
 Contact: Little Sioux Park  
 1746 O'Brien Ave., Correctionville, IA 51016  
 712-372-4984  
 Restrictions: No Hunting in Wildlife Refuge  
 Boat motors restricted to electric trolling motors  
 Park Closed 10:30 pm - 6:00am to non-campers  
 Park Facilities Closed Nov. 1 - May 1  
 Beach Open Memorial Day weekend - Labor Day  
 Beach Hours 11:00am - 8:00pm  
 No snowmobiles or ATVs  
 Shooting Range Open 9:00am - Sunset



180th Street

Correctionville

Park Entrance

O'Brien Ave

Wildlife Refuge

Wildlife Refuge

Wildlife Refuge

Little Sioux River

## Woodbury County, Iowa

T-88N, R-43W,  
 Section 1, 11, 12, 13

Directions: 1.3 miles SW of Correctionville on  
 Hywy 31, S 1/2 mile on O'Brien Ave

## Legend

- |                    |               |                   |            |                |                |
|--------------------|---------------|-------------------|------------|----------------|----------------|
| Union Bridge Trail | Rental Cabins | Modern Camping    | Restrooms  | Beach Shower   | Rental Shelter |
| Little Sioux Park  | Hunting Area  | Primitive Camping | Trail Head | Swimming       | Ranger Station |
| No Swimming        | Trailer Dump  | Fishing           | Canoeing   | Shooting Range | Parking        |

## Little Sioux Park South



Aerial Photo - Summer, 2010  
 Map Creation Date: 1/2011

Disclaimer: Information and boundaries depicted on this map have been carefully reviewed. However, this data is not guaranteed to be free of errors or inaccuracies as provided by Woodbury County or other providers and sources of data contained in this map. Boundary signs have been placed on our areas to ensure users do not trespass on private property.