



Woodbury County Conservation Dept.

4500 Sioux River Road, Sioux City, Iowa 51109
Phone: 712-258-0838
www.woodburyparks.org



Area Information

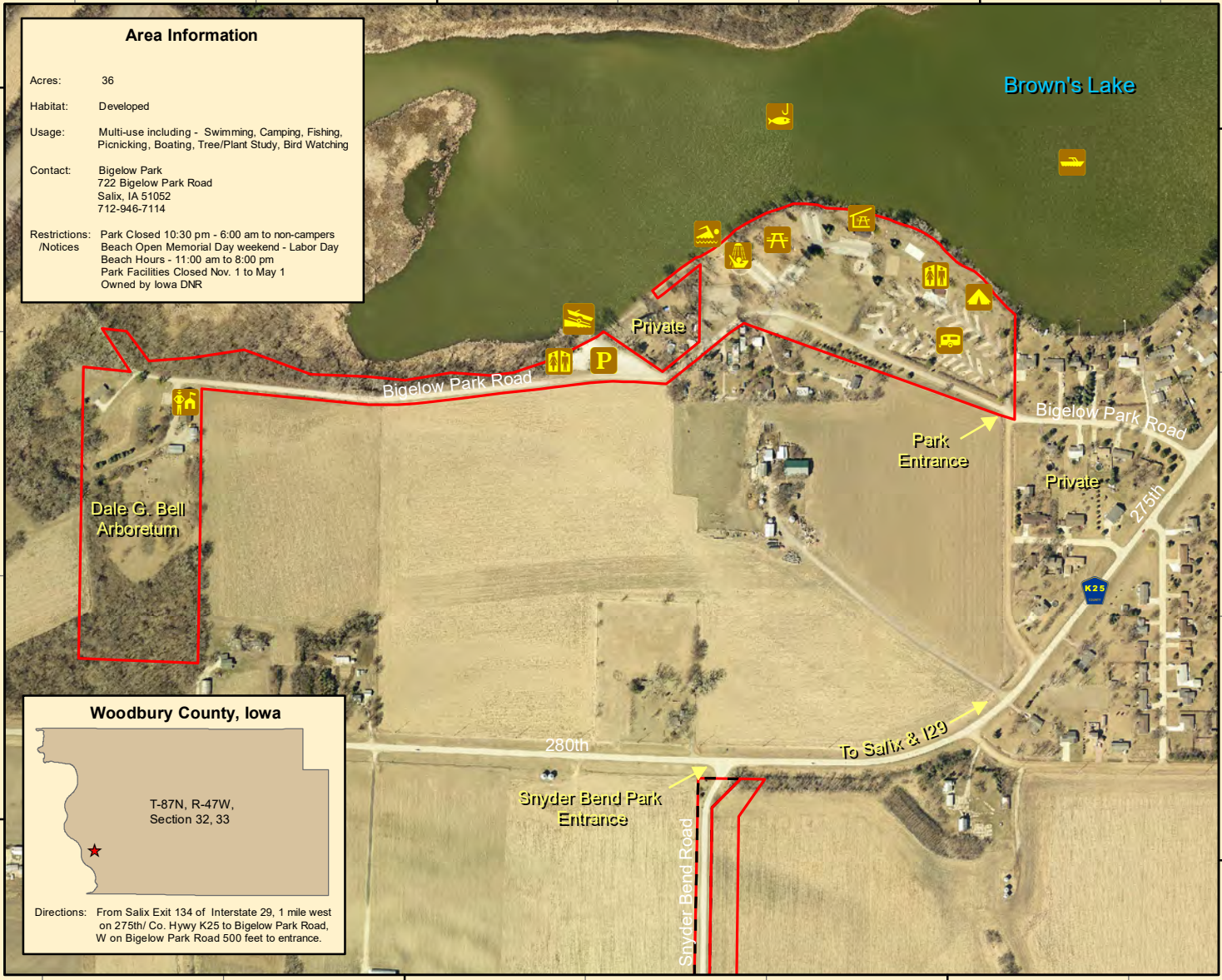
Acres: 36
Habitat: Developed
Usage: Multi-use including - Swimming, Camping, Fishing, Picnicking, Boating, Tree/Plant Study, Bird Watching
Contact: Bigelow Park
722 Bigelow Park Road
Salix, IA 51052
712-946-7114
Restrictions: Park Closed 10:30 pm - 6:00 am to non-campers
/Notices Beach Open Memorial Day weekend - Labor Day
Beach Hours - 11:00 am to 8:00 pm
Park Facilities Closed Nov. 1 to May 1
Owned by Iowa DNR

Dale G. Bell Arboretum

Woodbury County, Iowa

T-87N, R-47W,
Section 32, 33

Directions: From Salix Exit 134 of Interstate 29, 1 mile west on 275th/ Co. Hwy K25 to Bigelow Park Road, W on Bigelow Park Road 500 feet to entrance.



Legend					
Bigelow Park	Snyder Bend Park	Tent Camping	Restrooms	Swimming	Ranger Station
Picnicking	Trailer Camping	Fishing	Boating	Shower Building	Parking
Rental Shelter	Boat Launch				

Bigelow Park



Aerial Photo - Summer, 2010
Map Creation Date:1/2011

Disclaimer: Information and boundaries depicted on this map have been carefully reviewed. However, this data is not guaranteed to be free of errors or inaccuracies as provided by Woodbury County or other providers and sources of data contained in this map. Boundary signs have been placed on our areas to ensure users do not trespass on private property.