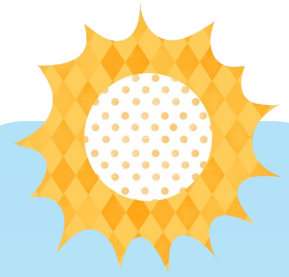


Summer Youth Program Guide



Woodbury County
Conservation Board

Dorothy Pecaut

Nature Center

4500 Sioux River Road

Sioux City, IA 51109

(712) 258-0838

www.woodburyparks.org

Introduction:

The Woodbury County Conservation Board has been offering quality educational programs since 1988. Our professional staff is committed to providing positive outdoor activities to engage your students in new and exciting discoveries. Our programs are designed to encourage life-long interest and appreciation of the outdoors. We invite you to visit one of our outdoor areas or have us come to your site for a nature adventure.

Our main offices are held at the Dorothy Pecaut Nature Center (DPNC) which is a popular choice for site visits. DPNC has interactive exhibits indoors, and outdoors kids can explore our woodlands and Loess Hills prairies, view live Birds of Prey in the Raptor House, and explore the Discovery Forest Nature Playscape. Other well-liked locations for field trips include: Brown's Lake/Bigelow Park, Snyder Bend Park, Southwood Conservation Area, Fowler Forest Preserve, Little Sioux Park, and Stone State Park.

To Schedule a Visit Contact:

Theresa Kruid, Naturalist — tkruid@woodburyparks.org

Tyler Flammang, Resource Naturalist — tflammang@woodburyparks.org

Dawn Snyder, Program Director -- dsnyder@woodburyparks.org

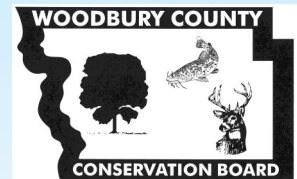
Or call any of us at 712-258-0838

Program Fees:

Self-guided Visits = Free, but require reservation

Naturalist-led Programs = \$1 per person with \$15 minimum

Archery, Fishing & Geocaching = \$2 per person with \$15 minimum



Programs Offered

Cost is \$1 per person. See details below.

Take a Hike

Guided hikes for all ages are available. Please wear sturdy shoes (no flip flops) and dress for the weather. A ratio of one adult to every 12 students is preferred.

Incredible Insects

We'll learn what makes insects unique from other animals. Searching outdoors with bug nets or jars will be included in the fun.

Animal Furs & Feathers

Local wildlife have amazing furs and feathers. We'll learn how to identify some animals by their furs and feathers.

Animal Tracks

How do you know an animal is near? By the clues they leave, like tracks. We'll learn some of the local wildlife footprints & look outdoors for them.

Live Animal Presentations

We have a variety of live educational animals residing at the Nature Center. Choose a turtle, snake, salamander, Kestrel, or Owl for your students to learn more about. Note: The Kestrel & Owl can not be touched.

Discovery Forest Nature Playscape

This amazing outdoor natural play area includes digging, climbing and music areas to encourage creative and imaginative play. A short walk from the Nature Center will introduce your students to a fun way to discover nature.

Junior League Legacy Exhibit Gallery

Crawl under the prairie like a badger, listen to prairie sounds, discover animals up close and learn about the Loess Hills. A scavenger hunt is available while you explore.



"Wonderful program! Such a great way to stop the brain drain from summer and keep them excited about learning."

Outdoor Skills Programs Offered

These are limited to 20 participants at a time. Cost is \$2 per person. See details below.

Archery

Students must be 4th grade and up. We'll learn how to hold and shoot a bow correctly. We'll shoot at targets only.

Fishing

Students must be 3rd grade and up. Must be done at one of the parks with a lake. We'll learn the basics of casting and try to catch a few fish.

Geocaching

Students must be 4th grade and up. They'll learn how to use GPS units and all about this high-tech scavenger hunt.

