

RULES - REGULATIONS

- Smoking is prohibited inside the cabins.
- Pets/animals are prohibited in or near the cabins.
- Keg beer is prohibited.
- Cabin furniture must remain inside cabins.
- Cooking/grilling is prohibited on the decks.
- Cleaning fish/game is prohibited in or near cabins.
- Park hours must be observed.
6:00 a.m. to 10:30 p.m.—May 1st to October 31st
- Quiet hours are 10:30 p.m.—9:00 a.m.
Non-registered guests must leave by 10:30 p.m.
- Tents and campers are not allowed in cabin area.
Please use campground.
- No one under the age of 21 is allowed to reserve a cabin or occupy a cabin unless accompanied by parent or legal guardian of at least 21 years of age.
- All Rules & Regulations of the Woodbury County Conservation Board are in effect.
- Failure to abide by the Cabin Policy or Cleanup Guidelines may result in a charge of up to \$50.
- Violation of park rules and regulations may result in fines, use privileges being rescinded, and forfeiture of reservation fees.
- Woodbury County Conservation board reserves the right of management to enter the cabins in an emergency, to inspect, and/or to replenish supplies.

SUGGESTED ITEMS TO BRING

- Complete bedding (pillows, sheets, blankets, mattress pads, and/or sleeping bags)
- Dish cloth and towels
- All food & beverage supplies
- All bath linens and toiletries
- Specialty cooking utensils
- Radio, alarm clock
- Lawn chairs
- Camera
- Flashlight

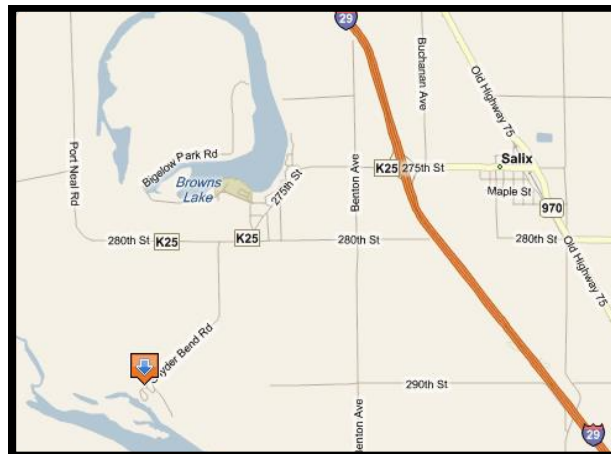
SUPPLIES PROVIDED

- Toilet tissue, dish & hand soap, and cleaning equipment
- Broom, dustpan & mop
- Waste baskets and garbage bags

SNYDER BEND PARK

- This 34-acre area is located one mile south of Bigelow Park near Salix, Iowa. Snyder Bend Lake is an oxbow of the Missouri River, formed in the early 1960's when the river was channelized.
- Double-wide boat ramp is available. Fishing and water skiing are popular activities.
- A modern campground at the north end of the park features 28 electrical sites and 12 tent sites.
- A ten-foot wide concrete trail connects the campground to the cabins and continues onto a scenic overlook deck of the lake.
- A large and small open picnic shelter are available to the public.
- Modern playground equipment and open play areas can be found in the park.
- The park features paved access and interior roads.

MAP/DIRECTIONS



Access from I-29:
Take Exit 134/Salix.
Travel west on 275th Street (CR-K25).
Turn left onto Snyder Bend Road and follow road through park. Cabins will be on the left.

In case of emergency, contact:

Park Resource Manager (712) 946-5622
Woodbury County Sheriff (712) 279-6510 or 911

SNYDER BEND PARK

FAMILY CABINS

2924 Snyder Bend Road
Salix, IA 51052



**All reservations are taken online:
WoodburyParks.org**

WOODBURY COUNTY CONSERVATION BOARD

4500 SIOUX RIVER ROAD
SIOUX CITY, IA 51109-1657

PHONE: (712) 258-0838

FAX: (712) 258-1261

www.woodburyparks.org

Regular Business Hours
Monday – Friday 8:00 a.m. – 4:30 p.m.

CABIN AMENITIES:

- ◆ Two bedrooms with queen-size beds
- ◆ Queen-size sofa bed in main room
- ◆ Fully-furnished kitchen with full-size refrigerator, range, microwave, sink, dishwasher, coffee pot, toaster, place settings, pots, pans & utensils
- ◆ Dining table and chairs
- ◆ Modern bathroom with shower
- ◆ Central heat and air conditioning
- ◆ Television & Blu-Ray disc player
- ◆ Wireless internet service
- ◆ Large deck with table
- ◆ Campfire ring/grill & no-freeze hydrant



SPECIFICATIONS

- Woodbury County Conservation Board offers four (4) 2-bedroom family cabins from May 1 to October 31.
- Built in 2010, the cabins are designed to offer a camping experience with most comforts of home.
- Cabins are 2 bedroom, 816 sq. ft. with a large deck and picnic table.
- Two cabins are handicap accessible. (Eagle & Falcon)
- Maximum number of occupants per cabin is 8. (6 adults and 2 children)

VEHICLES – PARKING

- Parking is available immediately adjacent to each cabin for a maximum of two (2) standard vehicles.
- No tents, R.V.'s fifth wheel campers, pickup campers, popups, etc. will be allowed at the cabin site or in the cabin parking lot.

CABIN RENTAL RATES

\$125/night (Weekends & Holidays)
\$85/night (Sunday -Thursday)

**Fee includes 5% statewide Hotel/Motel Consumer's Use Tax.*

May 1 - October 31

(Rules/Rates subject to change without notice)

CHECK IN – CHECK OUT

- Renters may check in after **4:00 p.m.** on the first day of the cabin reservation and are required to check out by **1:00 p.m.** on the last day of the reservation.
- Cabin keys may be retrieved from the key safe lockbox on the cabin.
- Returned keys are to be locked inside the cabin. Lost or stolen keys will result in a \$50 replacement charge.
- Cabins and surrounding grounds should be cleaned and left in good condition.

Check our website for more information!
www.woodburyparks.org

SNYDER BEND PARK CAMPING FEES

Non-electrical	\$15/night
Electrical & Water	\$20/night

Firewood available at park — \$6/bundle

RESERVATIONS TAKEN ONLINE WoodburyParks.org

- Cabins are available by reservation only and may be reserved up to 2 years in advance.
- Cabin fees for the entire stay must be paid by credit/debit card when reservations are made.
- Renter must be at least 21 years of age.
- Reservations are taken on a first-come/first-pay, first-served basis.
- Minimum two-night stay on weekends. (Fri./Sat.)
- Minimum three-night stay on Holiday weekends.
- Maximum stay of 14 days within a 30-day period.

RESPONSIBILITIES

- Renters are responsible for all guests and any damages, loss, or theft occurring during stay.
- Renters are responsible for cleaning cabin as required.

REFUND & CANCELLATION POLICY

All reservations are **FINAL & NON-REFUNDABLE**. SHOULD YOU CHOOSE TO CANCEL A RESERVATION, YOU WILL FORFEIT 100% OF ALL RESERVATION FEES PAID.

If the WCCB is unable to provide your facility (or like facility) in operable condition for the date of your event, however, a full refund will be issued.

Requests for any modification to an existing reservation must be made at least 2 weeks prior to the original reservation date. If the request is for a date change, the new date must be within 12 months of the existing date and must be used for the same type of facility in the same park. A reservation holder has only ONE opportunity to reschedule their original reservation. All requests must be made by calling the Conservation Office at (712) 258-0838. Any modifications to an existing reservation will be assessed a \$25 administrative fee.